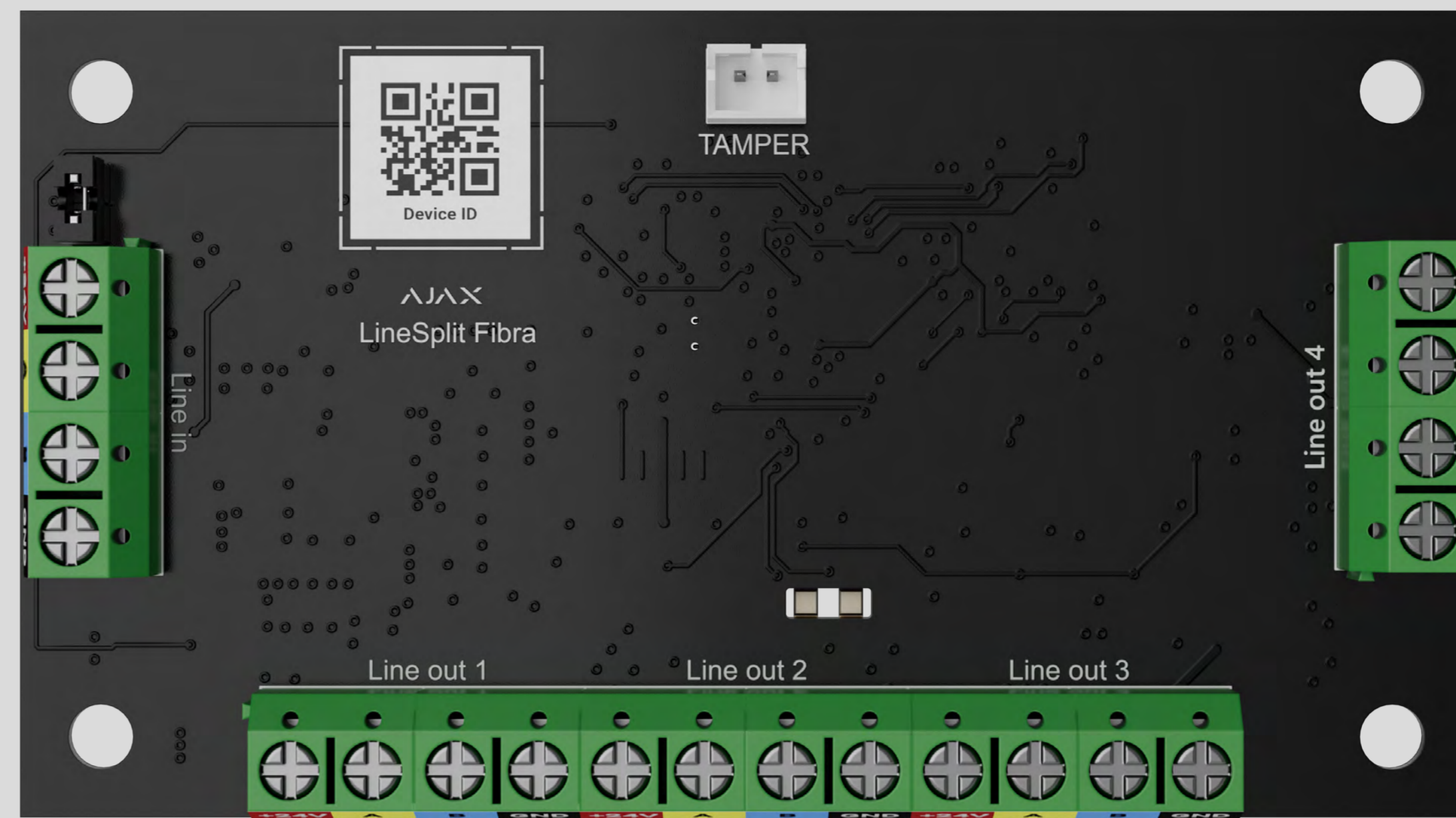




LineSplit Fibra

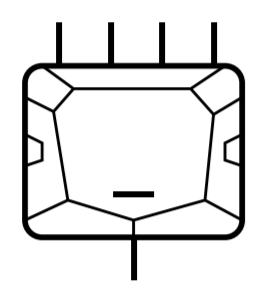
Module to split one Fibra line into four.



3
GRADE
EN 50131

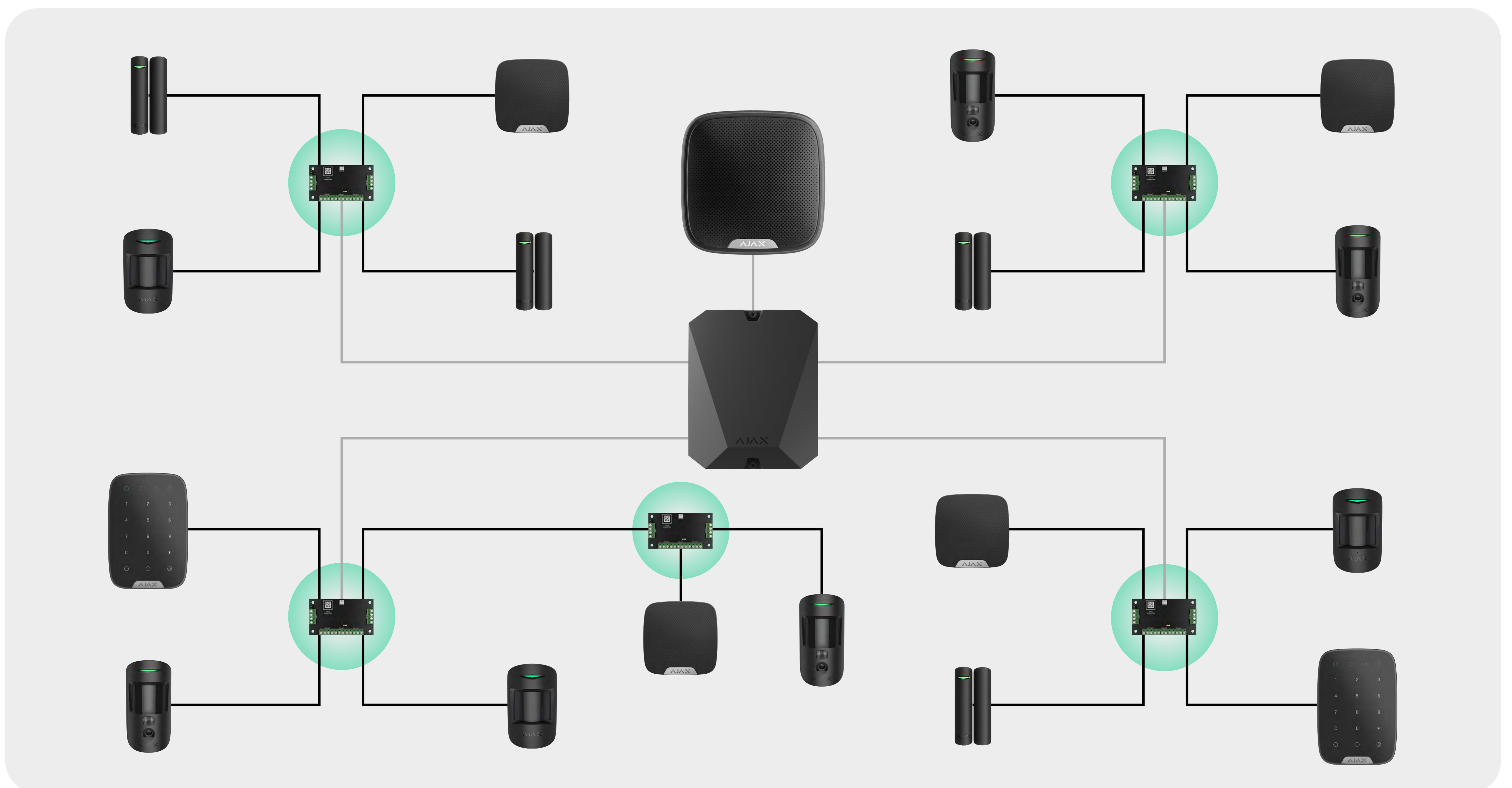
PD 6662
2017

This is the device of the Fibra product line. Only accredited Ajax Systems partners can sell, install, and administer Fibra products.



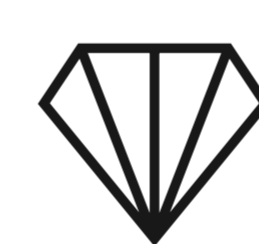
Designed to split the Fibra line

The LineSplit module splits one Fibra line into four ones. Each output line of the device can have a length of up to 2,000 m¹ when connected via the U/UTP cat.5 twisted pair cable. LineSplit can be installed at any point of the line, in particular after another LineSplit².



Sabotage protection

- Tamper alarm³
- Protection against spoofing
- Device authentication



Fibra

communication technology

- Wired communication with a hub at a distance of up to 2,000 m
- Connection encryption
- Regular polling to display current statuses of the devices
- 2,000 meters of wired connection length for each of the four output lines⁴

Easy-to-mount into Case

- LineSplit Fibra is installed into Case
- Case has an optimal arrangement of wire channels, special holders for the module, and the tamper
- Several variations with different size of casings

Quick setup

- Pairing with the hub via the line scanning function or QR code
- Configuring and testing remotely or on-site

| | | | |
|---|---|---|---|
| <p>Intended certifications</p> <p>EN 50131 (Grade 3) PD 6662:2017</p> | <p>Compatibility</p> <p>Control panels Hub Hybrid (2G), Hub Hybrid (4G)</p> | <p>Communication with a control panel</p> <p>Fibra communication technology</p> <p>Wired connection U/UTP cat.5 4×2×0.51 with a copper conductor</p> <p>Signal cable 4×0.22 with a copper conductor</p> <p>Communication range up to 2,000 m With U/UTP cat.5, 4×2×0.51 cable</p> | <p>Connection to a Fibra line</p> <p>Number of output lines 4</p> <p>Number of input lines 1</p> |
| <p>Power supply</p> <p>6–30 V⁼⁼, up to 25 mW Power supply source from the Fibra line.</p> | <p>Installation</p> <p>Operating temperature range from -10°C to +40°C</p> <p>Operating humidity up to 75%</p> | <p>Module</p> <p>Dimensions 90 × 50 × 15 mm</p> <p>Weight 34 g</p> | <p>Complete set</p> <p>LineSplit Fibra Quick start guide</p> <p>Case is not included in the complete set. Case is sold separately from the LineSplit Fibra module.</p> |

1 – LineSplit Fibra does not provide additional power supply to the line.




2 – Up to 10 LineSplit Fibra modules can be installed one after the other, connecting each module to the output line of the previous one.

3 – Notification of attempts to break or open Case. Case is sold separately.

4 – When using a U/UTP cat.5, 4×2×0.51 cable.



For detailed information, scan the QR code or follow the link:
ajax.systems/support/devices/linesplit-fibra/

-  support@ajax.systems
-  @AjaxSystemsSupport_Bot
-  ajax.systems